

THE MAPLES APARTMENTS ARE DESIGNED FOR INDEPENDENT INDIVIDUALS WHO VALUE COMFORT, ELEGANCE, SECURITY AND COMMUNITY. THESE SPACIOUS ONE AND TWO-BEDROOM APARTMENTS ARE CONVENIENTLY LOCATED IN OUR MAIN BUILDING WHERE ALL THE ACTION TAKES PLACE. FUTURE ASSISTANCE IS CLOSE BY AND CONVENIENT TO COORDINATE SHOULD THE NEED ARISE.



APARTMENT FEATURES

- Spacious 1 and 2 bedroom apartments ranging from 550 to 1,315 square feet
- All floor plans include a balcony or patio
- Fireplace included (some floor plans)
- Mini-blind window treatments for privacy
- Individually controlled heating and air conditioning
- Fully equipped kitchens with stove, microwave, refrigerator, dishwasher, and garbage disposal
- High quality appliances (Energy Star rated), counter tops, cabinetry and building materials
- Washer and dryer in each apartment
- Two bathrooms – one with walk-in shower and one with bathtub/shower (one bedroom apartments include walk-in shower)
- Pre-wired for telephone and cable television
- Smoke detectors, fire alarms and sprinkler system
- Additional private storage unit
- Carports are available
- Pendant style, 24-hour, in-house emergency system



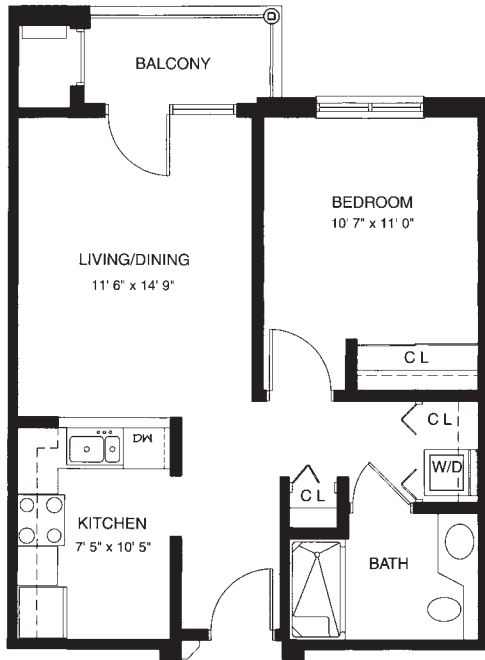
SILVER MAPLES
of Chelsea

RETIREMENT NEIGHBORHOOD

THE MAPLES

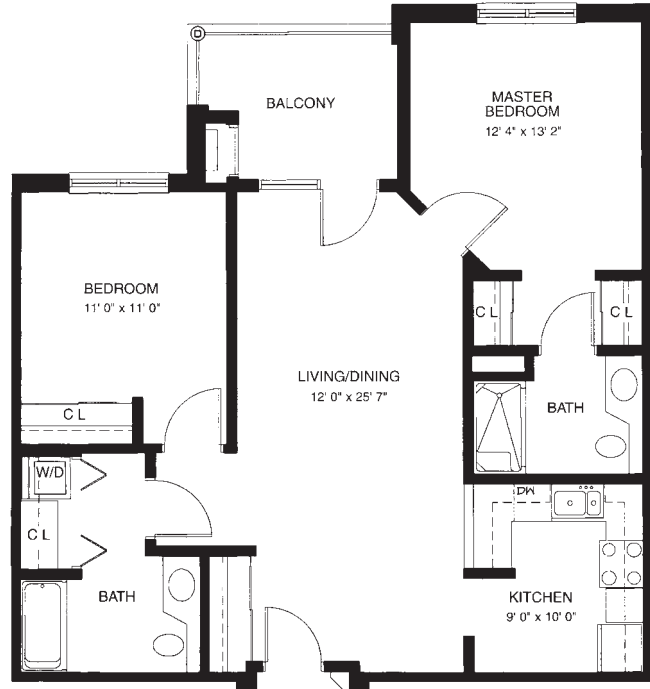
ASPEN

550 sq. ft / 1 bedroom / 1 bathroom



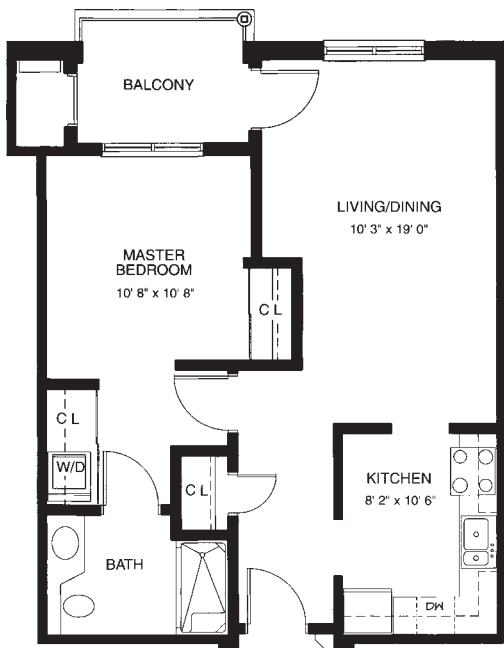
CEDAR

980 sq. ft / 2 bedroom / 2 bathroom



BAYBERRY

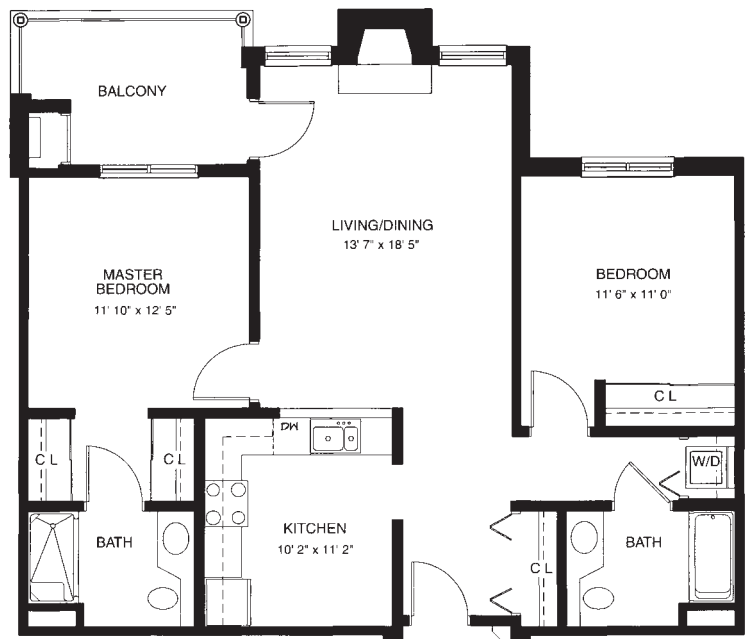
600 sq. ft / 1 bedroom / 1 bathroom



DOGWOOD & ELDERBERRY

1,040 sq. ft / 2 bedroom / 2 bathroom

Fireplace in Dogwood only



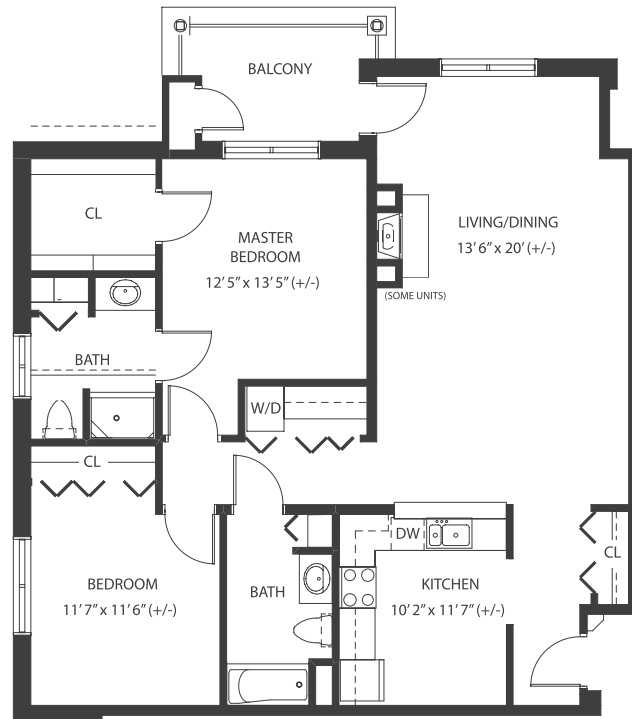
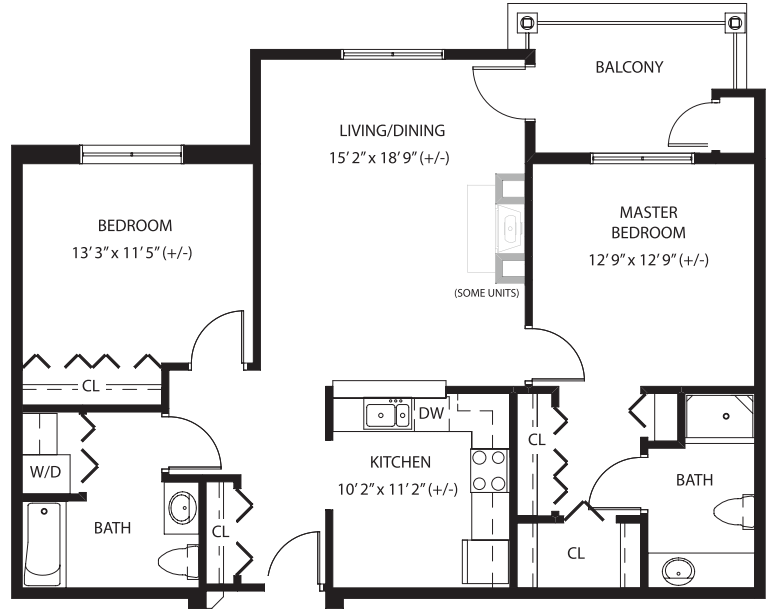
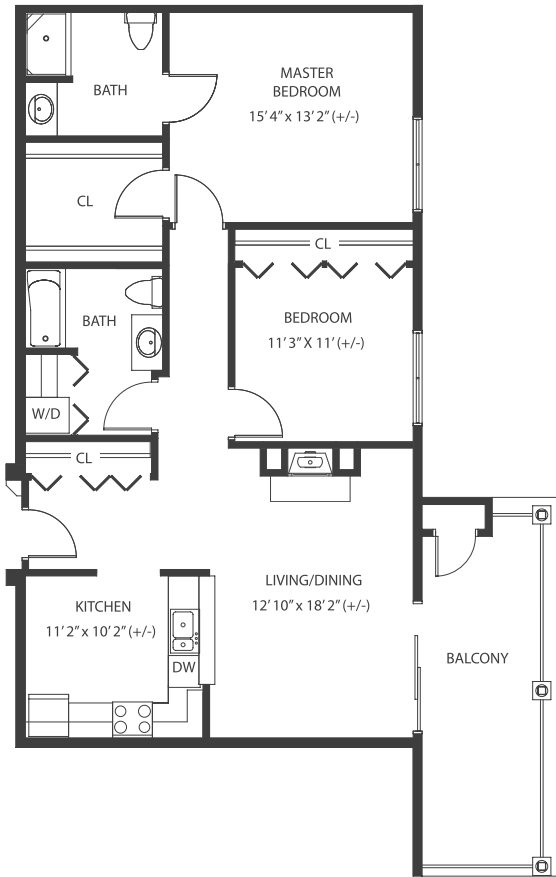


GOLDENBELL & GOLDENROD

1,160 sq. ft / 2 bedroom / 2 bathroom

HONEYSUCKLE

1,145 sq. ft / 2 bedroom / 2 bathroom



IVY

1,315 sq. ft
2 bedroom
2 bathroom

NOTE: Some units may vary in layout. All dimensions are approximate.

SILVER MAPLES THE MAPLES



HOME AMENITIES

- Twenty meals per month in the Trellis Dining Room, Bistro 100, or Courtyard Café - multiple entrée choices per meal (Your choice of Breakfast, Lunch or Dinner)
- Property taxes and all utilities (except telephone & cable television) are included
- Multi-faceted and dynamic event and activity programs with an emphasis on overall wellness, planned by a full time Wellness Director
- Free local transportation, including personal appointments, Sunday Church services, and special event excursions
- Bi-weekly housekeeping with flat linens
- Maintenance of apartment provided
- Free WiFi
- Automated emergency notification system

HEALTH & WELLNESS

- Access to Community Wellness Paths
- Exercise Room
- Instructor-Led Exercise Classes
- Membership to Chelsea Wellness Center (www.chelseawellness.org)
- On-site Social Services
- On-site Personal Assistance Program

COMMUNITY AMENITIES

- Beautifully Landscaped Grounds with Paved Walking Paths
- Maples Room - A beautiful multi-purpose room used for large in-house special events and community events
- Gallery 100 - Art showcase featuring local artists
- Trellis Dining Room
- Courtyard Café
- Bistro 100
- Private Dining Room
- Garden Room with HD Television
- Arts/Crafts Room
- Silver Maples Spa, Salon and Barbering
- Game Room with Pool Table
- Woodworking Shop
- Library/Lounge with Fireplace
- Raised Garden Boxes
- Horseshoe Pits
- Garden Areas and Courtyard with Outside Seating

APARTMENT STYLE	MONTHLY FEES	ENTRY FEE 90% Refundable	ENTRY FEE 50% Refundable	ENTRY FEE 0% Refundable
One-Bedroom Options:				
Aspen (550 sq. ft.)	\$2,450	\$125,400	\$77,800	\$54,000
Bayberry (600 sq. ft.)	\$2,650	\$137,400	\$85,200	\$59,100
Two-Bedroom Options:				
Cedar (980 sq. ft.)	\$3,025	\$192,400	\$119,300	\$82,700
Dogwood (1,040 sq. ft.)	\$3,205	\$205,700	\$127,500	\$88,500
Elderberry (1,040 sq. ft.)	\$3,205	\$205,700	\$127,500	\$88,500
Honeysuckle (1,145 sq. ft.)	\$3,305	\$224,400	\$139,200	\$96,500
Golden Bell (1,160 sq. ft.)	\$3,330	\$227,800	\$141,200	\$98,000
Golden Rod (1,165 sq. ft.)	\$3,330	\$227,800	\$141,200	\$98,000
Ivy (1,315 sq. ft.)	\$3,820	\$251,900	\$156,200	\$108,300
2nd Person Fee	\$755			

TERMS

Entry fee refunds vary based on contract type selected and is refunded to the Resident or Resident’s estate after leaving Silver Maples and/or The Meadows. Entry fee decreases at a rate of 1½% per month until contractual amount is fully earned.

If a resident transfers to The Meadows (assisted living residence), \$400/month is deducted from the applicable Meadow’s monthly service fee for up to 36 months. This discount does not reduce the refundable portion of your entry fee. All Independent Living residents have priority access to Chelsea Retirement Community for Advanced Memory Care or Skilled Nursing, assuming they meet admission criteria and financial requirements. *Prices are subject to change with 60 days prior written notice to residents.*

***A 15% Seasonal Discount of monthly fees is available for those who are away for 3 or more consecutive months, but maxes at 6 months.**

INCLUDED SERVICES

- (20) Meals Per Month
- Bi-weekly Housekeeping & Flat Linen Service
- 24-Hr. In-House Pendant-Style Call System
- All Utilities (except phone & cable)
- Property Taxes
- Maintenance of Apartment
- Storage Unit
- Access to all Common Areas
- Free Local Transportation (Including personal appointments and special event excursions)
- Multi-faceted and dynamic event and activity program with an emphasis on overall wellness, planned by a full time Wellness Director
- Free Membership to the Chelsea Wellness Center



SILVER MAPLES
of Chelsea

Optional Services are available (see reverse side)

OPTIONAL SERVICES

Additional Meals	Breakfast: \$6 Lunch: \$7.50 Dinner: \$14
Tray Service	\$3/Tray
Guest Apartment / V.I.P. Suite	\$95/Night (2 bedroom/2 bathroom)
Rollaway Bed Rental	\$15 for each reservation
Housekeeping	\$20/Hour
Carport	\$35/Month or \$350/Year
Personal Assistance	\$21/Hour (<i>A minimum 1 hr. fee is required</i>)
Personal Shopping	See Personal Assistance Program Assistant