

THE MEADOWS APARTMENTS ARE A PERFECT LIVING OPTION FOR THOSE WHO FIND INDEPENDENT LIVING TO BE A CHALLENGE, BUT ARE NOT IN NEED OF 24-HOUR NURSING CARE. RESIDENTS RECEIVE THE PERSONAL CARE AND ATTENTION THEY NEED AND DESERVE TO CONTINUE TO ENJOY THEIR LIFE. THE MEADOWS AT SILVER MAPLES IS LICENSED THROUGH THE STATE OF MICHIGAN AS A HOME FOR THE AGED.



APARTMENT FEATURES

- Private apartments range from 400 to 812 square feet
- Mini-blind window treatments for privacy
- Individually controlled heating and air conditioning
- Kitchenette including microwave, refrigerator, freezer and sink
- High quality counter tops, cabinetry and building materials
- Private bath with walk-in shower
- Pre-wired for telephone and cable television
- Smoke detectors, fire alarms and sprinkler system
- Ample parking for residents and guests
- Carports available

SAFETY FEATURES

- Pendant style, 24-hour in-house call system
- Grab bars (per resident specific needs)
- Wide doorways
- Wander management system
- Carports are available

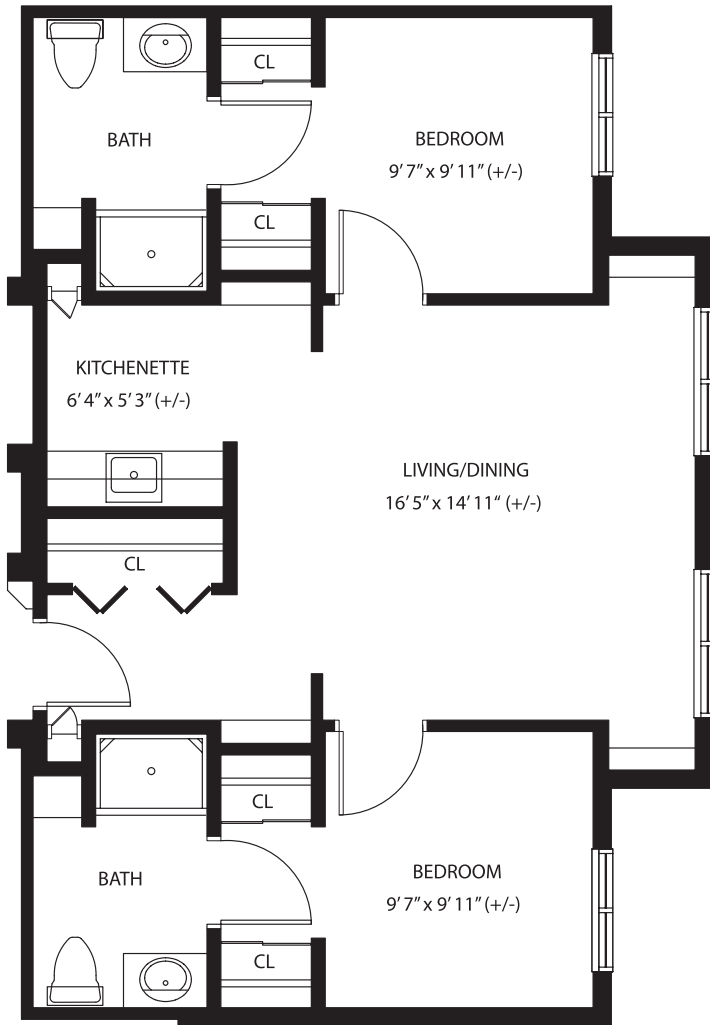


SILVER MAPLES
of Chelsea

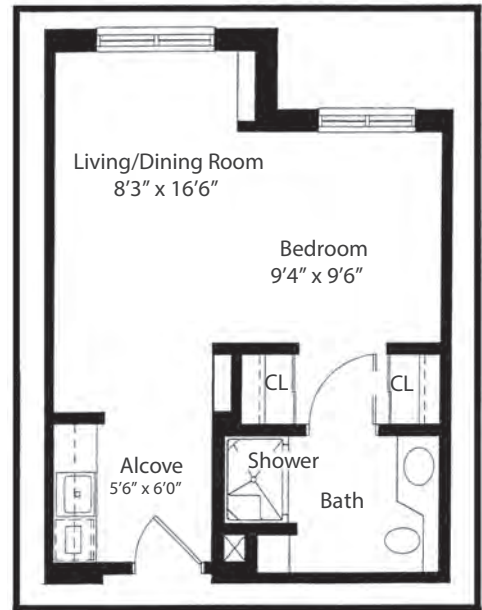
RETIREMENT NEIGHBORHOOD

THE MEADOWS

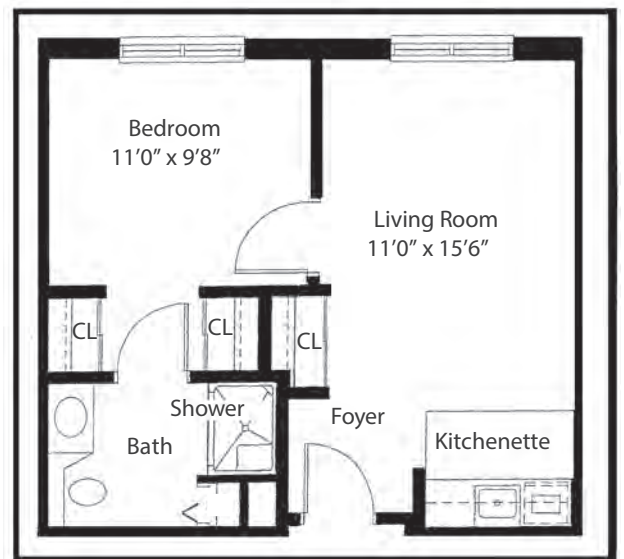
TUPELO
2 bedroom
812 sq. ft.



AZALEA
Alcove / Studio
400 sq. ft.



OAK
1 bedroom
440 sq. ft.



NOTE: Some units may vary in layout. All dimensions are approximate.

Each resident will be assessed and their tier level determined individually. The Assisted Living Director and Clinical Coordinator determine the level of care needed. Monthly service fees vary based on tier level of care needed and size of apartment desired.

	Transitions	TIER 1	TIER 2	TIER 3*
Meals per day	» 3 meals » Evening snack	» 3 meals » Evening snack	» 3 meals » Evening snack » Transportation to and from meals	
Laundry	» Weekly	» Weekly	» Weekly	» Weekly (additional if needed)
Housekeeping	» Weekly	» Weekly	» Weekly + additional bathroom cleaning	
Personal Care (e.g. dressing)	» Self managed or simple cueing	» Minimal assistance	» Frequent assistance and close supervision	
Bath/ Showers	» Self managed	» Stand-by assistance for safety	» Frequent hands-on assistance for care and safety	
Incontinence Assistance	» Self managed	» Minimal assistance	» Frequent assistance and supervision	
Medication Assistance and Administration	» Refills » Simple oral medication	» Refills » Simple oral medications, eye drops and inhalers	» Refills » Medication changes more than monthly » Complex medication regimens (i.e. insulin, meds requiring close monitoring, Coumadin, psychoactive meds, crushing meds, subcutaneous injections)	
Medical Care Assistance	» Self managed	» Coordination	» Scheduling and coordination	
Safety and Judgement	» Due to the complexity of cognitive impairments, this area is individually assessed based on multiple factors that affect an individual's need for cueing and supervision.			
Medical Support	» Emergencies	» Routine care (i.e. braces, weekly glucometer checks, vital signs ordered by licensed health professional)	» Non-routine support (i.e. frequent vital signs, daily to weekly glucometer ordered by licensed health professional, NMT treatments, hospice care)	» Tier 2 plus any type of care that requires additional support (i.e., behavioral changes and assessments requiring close supervision, frequent monitoring of health status needs)
Activities	» Scheduled community activities & events	» Daily reminders for activities	» Daily reminders and assistance to/from activities	
Transfers/ Mobility	» Self managed or minimal assistance		» 1 person assist	» 2 person assist or use of mechanical device

* PLEASE NOTE: Tier 3 is available for current Silver Maples residents only.

SILVER MAPLES THE MEADOWS



HOME AMENITIES

- Three nutritious meals every day served in the Arbor Dining Room or Courtyard Café (Multiple entrée choices per meal)
- 4 levels of assistance with activities of daily living, including medication administration at ALL levels
- All utilities included (except telephone and cable television)
- Free local transportation, including personal appointments, Sunday Church services, and special event excursions
- Well-balanced and dynamic event and activity program, coordinated by a full-time, certified Wellness Director and staff.
- Weekly housekeeping and laundry
- Daily bed making
- Maintenance of apartment included
- Free WiFi

HEALTH & WELLNESS

- Access to Community Wellness Paths
- Exercise Room
- Instructor-Led Exercise Classes
- Membership to Chelsea Wellness Center (www.chelseawellness.org)
- On-site Social Services
- On-site Personal Assistance Program

COMMUNITY AMENITIES

- Arbor Dining Room
- Courtyard Café and Sundries
- Private Dining Room
- Great Room with HD Television
- Arts/Crafts Room
- Silver Maples Spa, Salon and Barbering
- Private Therapeutic Whirlpool Accommodations
- Game Room with Pool Table
- Woodworking Shop
- Library/Lounge with Fireplace
- Raised Victory Garden
- Horseshoe Pits
- Garden Areas and Courtyard with Outside Seating
- Gallery 100 - Art showcase featuring local artists
- Beautifully Landscaped Grounds with Paved Walking Paths
- Maples Room - Beautiful multi-purpose room used for large in-house special events and community events

APT. STYLE	TRANSITIONS	TIER1	TIER2
Azalea (Alcove, 400 sq. ft.)	\$4,840	\$5,560	\$6,205
<i>*Furnished</i>	\$5,090	\$5,810	\$6,455
Oak (1-Bdrm, 440 sq. ft.)	\$5,530	\$6,260	\$6,895
<i>*Furnished</i>	\$5,780	\$6,510	\$7,145
Tupelo (2-Bdrm, 812 sq. ft.)	\$6,910	\$7,490	\$8,125
<i>*Furnished</i>	\$7,160	\$7,740	\$8,375
2nd Person Fee	\$1,630		

TERMS

Prior to moving in, the Resident is expected to pay the first month's service fee and the last month's service fee in advance for the apartment.

*Furnished apartments will include a bed, mattress and bedside stand.

Once deposit is paid, resident has 10 days to move in. Unused prepaid monthly service fees are refundable to Resident or Resident's estate after leaving The Meadows and it is determined there are no damages that have to be deducted. All Assisted Living residents have priority access to Chelsea Retirement Community for Advanced Memory Care or Skilled Nursing, assuming they meet admission criteria and financial requirements. *Prices are subject to change with 60 days prior written notice to residents.*

INCLUDED SERVICES

- (3) Meals Daily
- Weekly Housekeeping & Laundry Service
- Daily Bed Making
- (4) Levels of Assistance with Daily Living Activities
 - *Medication management included in all levels*
- Pendant-Style, 24-Hr. In-House Call System
- All Utilities (except phone & cable)
- Maintenance of Apartment
- Free Local Transportation (Including personal appointments and special event excursions)
- Multi-faceted and dynamic event and activity program with an emphasis on overall wellness, planned by a full time Wellness Director and staff
- Free Membership to the Chelsea Wellness Center



SILVER MAPLES
of Chelsea

Optional Services are available (see reverse side)

OPTIONAL SERVICES

Additional Meals	Breakfast: \$6 Lunch: \$7.50 Dinner: \$14
Tray Service	\$3/Tray
Guest Apartment / V.I.P. Suite	\$95/Night (2 bedroom/2 bathroom)
Rollaway Bed Rental	\$15 for each reservation
Housekeeping	\$20/Hour
Personal Assistance	\$21/Hour (<i>A minimum 1 hr. fee is required</i>)
Personal Shopping	See Personal Assistance Program Assistant