

Beautiful Spaces!

COMMON AREAS



- Trellis Dining Room w/fireplace
- Bistro 100
- Courtyard Café
- Private Dining Room
- Garden Room w/television
- Arts and Crafts Room
- Game Room w/billiards table
- Woodworking Shop
- Library and lounge w/fireplace
- Raised garden beds
- Horseshoe pits
- Private courtyard & scenic gardens
- Putting green
- Cutting garden
- Gallery 100 – Art Gallery showcasing local artists
- Community Wellness Paths – a paved path that connects several other paths in the community
- Maples Room – a beautiful multi-purpose room used for large in house special events as well as community events

Essential Services

INCLUDED SERVICES

- **(20) Meals** per month offered in the dining venue of your choice (can be used for breakfast, lunch or dinner)
- Bi-weekly **housekeeping** and flat linen service
- Property taxes and all utilities are included (except telephone & cable television)
- Pendant-style, **24-hour in house call system**
- Interior and exterior **maintenance**
- **Free Wifi**
- **Free local transportation**, including personal appointments, Sunday church service, and special event excursions
- Multi-faceted, dynamic **event and activity programming** with an emphasis on overall wellness, coordinated by a full-time certified Wellness Director
- **Free membership** to the Chelsea Wellness Center



Casual Spaces



Wide Open Spaces

IN-HOUSE SERVICES

- Salon, spa and barbering
- Massage therapy
- Foot care nurse
- Postal and notary services
- Social work services
- Lab work
- ATM
- Interdenominational worship services
- Personal assistance program
- Instructor-led exercise classes



Cozy Spaces

THE MAPLES



INDEPENDENT LIVING

Apartments

Independent senior living apartments designed for individuals and couples alike who value comfort, convenience and community.

Located in our main building, these spacious one and two-bedroom apartments are steps away from social programming and various dining venues. Offering 9 distinctive floor plans, ranging from 550 to 1,315 square feet, these desirable layouts all include either a private balcony or patio.



THE MAPLES

APARTMENT FEATURES

- Spacious 1 and 2-bedroom apartments ranging from 550 to 1,315 square feet
- Balcony or patio included in all floor plans
- Gas fireplace included in select 2-bedroom floor plans
- Mini-blind window treatments provided for privacy
- Individually controlled heating and air conditioning
- High quality appliances, counter tops, cabinetry and building materials
- Fully equipped kitchen with stove, microwave, refrigerator, dishwasher, and garbage disposal
- Washer and dryer provided
- Bathrooms include a tub/shower combo and walk-in shower in the master bath
- Pre-wired for telephone and cable television
- Smoke detectors, fire alarms and sprinkler system
- Additional storage unit, located in main building
- 9-foot, partially vaulted ceilings in select 2-bedroom floor plans

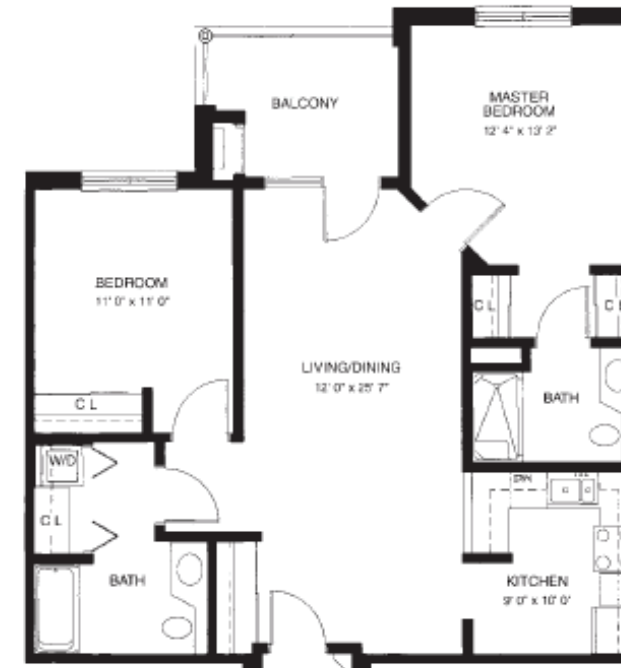
ASPEN
1 Bed | 1 Bath | 550 sq.ft



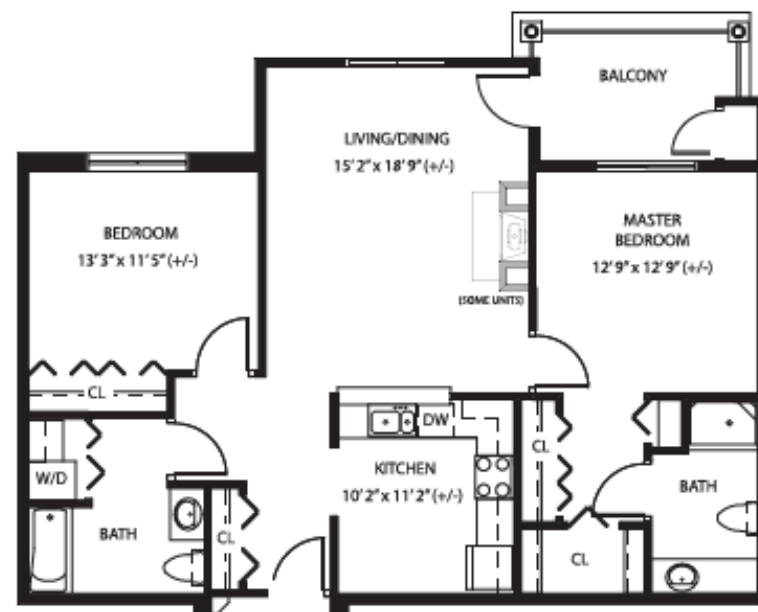
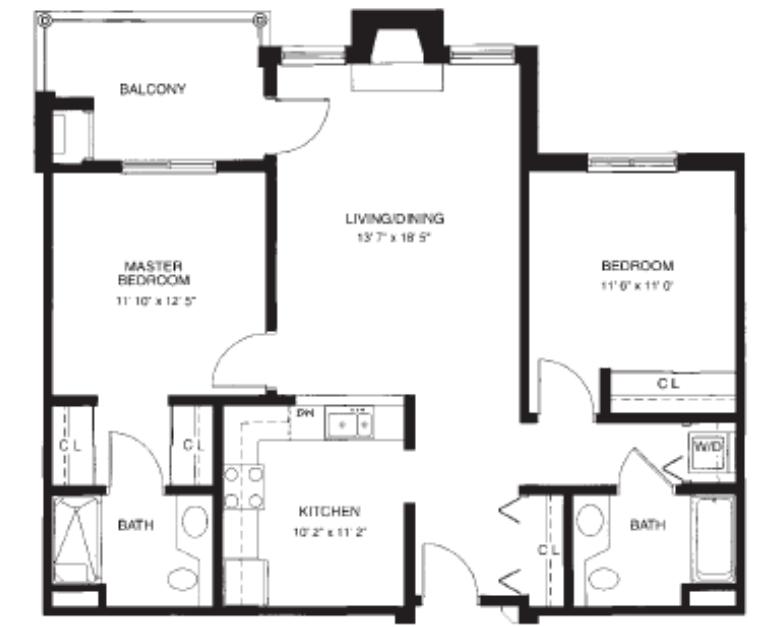
BAYBERRY
1 Bed | 1 Bath | 600 sq.ft



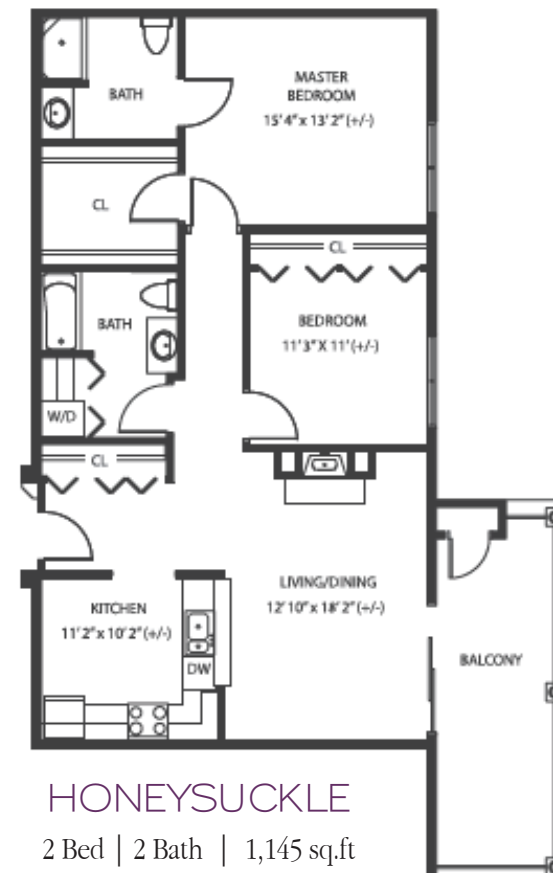
CEDAR
2 Bed | 2 Bath | 980 sq.ft



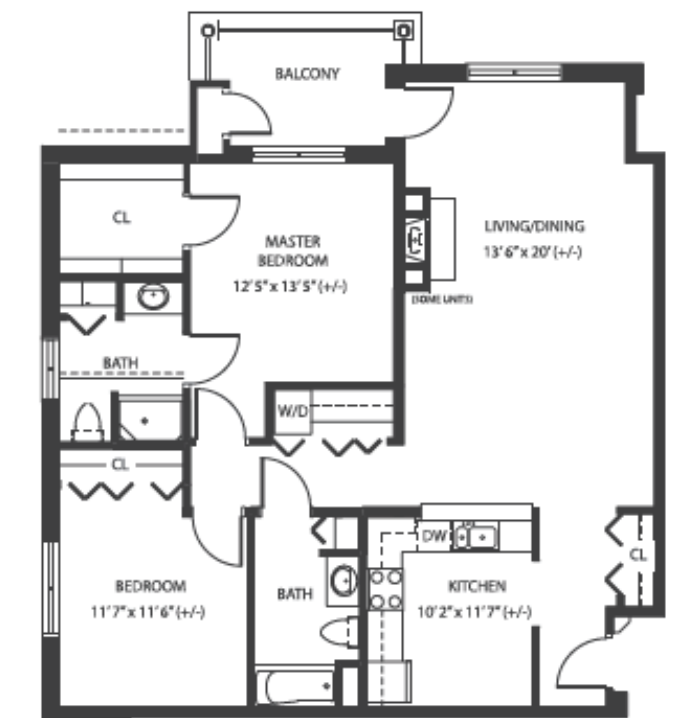
DOGWOOD & ELDERBERRY
2 Bed | 2 Bath | 1,040 sq.ft
Fireplace in Dogwood only



GOLDENBELL & GOLDENROD
2 Bed | 2 Bath | 1,160 sq.ft



HONEYSUCKLE
2 Bed | 2 Bath | 1,145 sq.ft



IVY
2 Bed | 2 Bath | 1,315 sq.ft



NOTE: Some units may vary in layout. All dimensions are approximate.

2019 Price List

APARTMENT STYLE	MONTHLY FEES	ENTRY FEES		
		90% Refundable	50% Refundable	0% Refundable
One-Bedroom Options:				
Aspen (550 sq. ft.)	\$2,505	\$132,000	\$ 82,000	\$ 57,000
Bayberry (600 sq. ft.)	\$2,715	\$145,000	\$ 90,000	\$ 62,000
Two-Bedroom Options:				
Cedar (980 sq. ft.)	\$3,100	\$202,000	\$125,000	\$ 87,000
Dogwood (1,040 sq. ft.)	\$3,280	\$216,000	\$134,000	\$ 93,000
Elderberry (1,040 sq. ft.)	\$3,280	\$216,000	\$134,000	\$ 93,000
Honeysuckle (1,145 sq. ft.)	\$3,385	\$236,000	\$146,000	\$101,000
Golden Bell (1,160 sq. ft.)	\$3,410	\$240,000	\$148,000	\$103,000
Golden Rod (1,165 sq. ft.)	\$3,410	\$240,000	\$148,000	\$103,000
Ivy (1,315 sq. ft.)	\$3,910	\$264,000	\$164,000	\$114,000
2nd Person Fee	\$ 770			

TERMS

Entry fee refunds vary based on contract type selected and is refunded to the resident or resident's estate after leaving Silver Maples. The non-refundable portion of the entry fee is amortized at a rate of 1.5% per month until the contractual amount is fully earned.

If a resident transfers to The Meadows (assisted living residence), \$400/month is deducted from the applicable Meadow's monthly service fee for up to 36 months. This discount does not reduce the refundable portion of your entry fee. All Independent Living residents have priority access to Chelsea Retirement Community for advanced Memory Care or Skilled Nursing, assuming they meet admission criteria and financial requirements. *Prices are subject to change with 60 days prior written notice to residents.*

***A 15% Seasonal Discount of monthly fees is available for those who are away for 3 or more consecutive months, but not to exceed 6 months.**

INCLUDED SERVICES

- (20) Meals Per Month
- Bi-weekly Housekeeping & Flat Linen Service
- 24-Hr. In-House Pendant-Style Call System
- All Utilities (except phone & cable)
- Property Taxes
- Maintenance of Apartment
- Storage Unit
- Access to all Common Areas
- Free WiFi
- Free Local Transportation (Including personal appointments and special event excursions)
- Multi-faceted, dynamic event and activity program with an emphasis on overall wellness, planned by a full time Wellness Director
- Free Membership to the Chelsea Wellness Center



THE MAPLES

OPTIONAL SERVICES

Additional Meals	Breakfast: \$6 Lunch: \$8.50 Dinner: \$15
Tray Service	\$3/Tray
Guest Apartment / V.I.P. Suite	\$95/Night (2 bedroom/2 bathroom)
Rollaway Bed Rental	\$15 for each reservation
Additional Housekeeping	\$20/Hour
Carport	\$35/Month or \$350/Year
Personal Assistance	\$21/Hour (<i>A minimum 1 hr. fee is required</i>)
Personal Shopping	See Personal Assistance Program Assistant
Pet Deposit	\$750