

THE MAPLES



Independent senior living apartments designed for individuals and couples alike who value comfort, convenience and community.

Located in our main building, these spacious one and two-bedroom apartments are steps away from social programming and various dining venues. Offering 9 distinctive floor plans, ranging from 550 to 1,315 square feet, these desirable layouts all include either a private balcony or patio.



INDEPENDENT
LIVING

Apartments



SILVER MAPLES
of Chelsea
RETIREMENT NEIGHBORHOOD

THE MAPLES

APARTMENT FEATURES

- Spacious 1 and 2-bedroom, apartments ranging from 550 to 1,315 square feet
- Balcony or patio included in all floor plans
- Gas fireplace included in select 2-bedroom floor plans
- Mini-blind window treatments provided for privacy
- Individually controlled heating and air conditioning
- High quality appliances, counter tops, cabinetry and building materials
- Fully equipped kitchen with stove, microwave, refrigerator, dishwasher, and garbage disposal
- Washer and dryer provided
- Bathrooms include a tub/shower combo and walk-in shower in the primary bath
- Pre-wired for telephone and cable television
- Smoke detectors, fire alarms and sprinkler system
- Additional storage unit, located in main building
- 9-foot, partially vaulted ceilings in select 2-bedroom floor plans



SILVER MAPLES
of Chelsea

RETIREMENT NEIGHBORHOOD

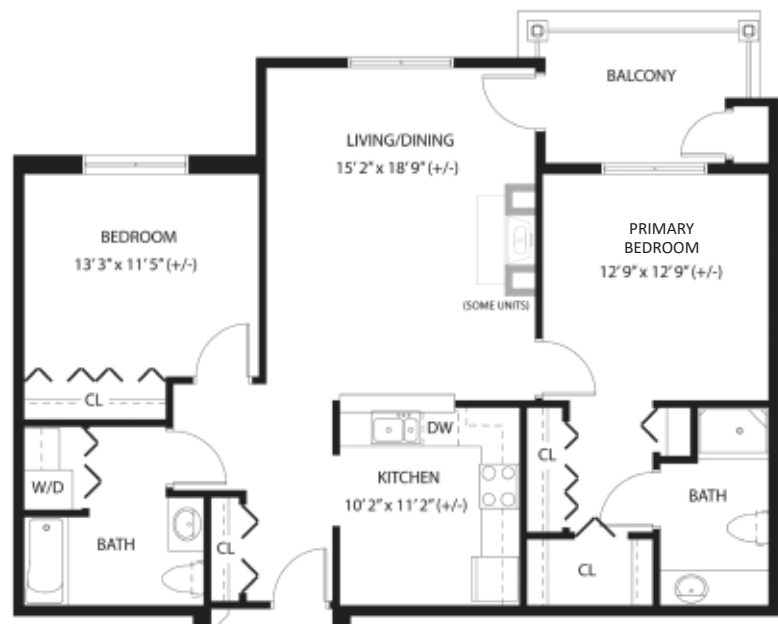
ASPEN

1 Bed | 1 Bath | 550 sq. ft.



BAYBERRY

1 Bed | 1 Bath | 600 sq. ft.



GOLDENBELL & GOLDENROD

2 Bed | 2 Bath | 1,160 sq. ft.

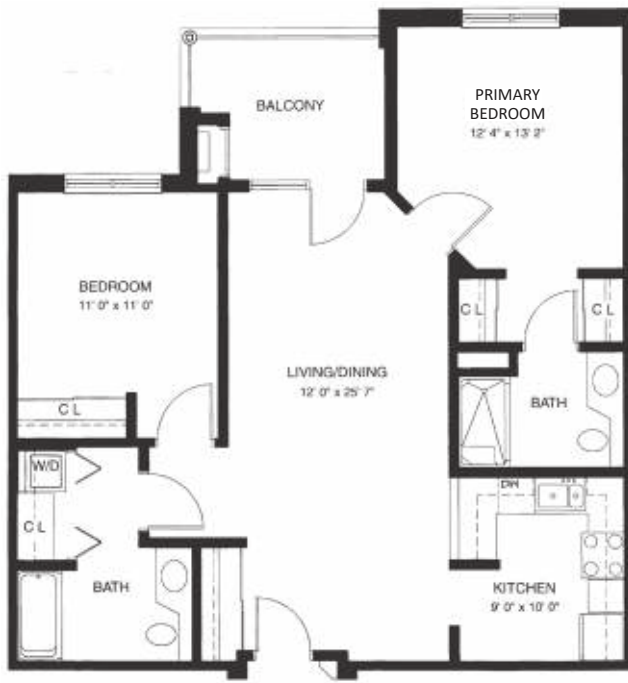


Pet Friendly

100 Silver Maples Drive, Chelsea, MI 48118

CEDAR

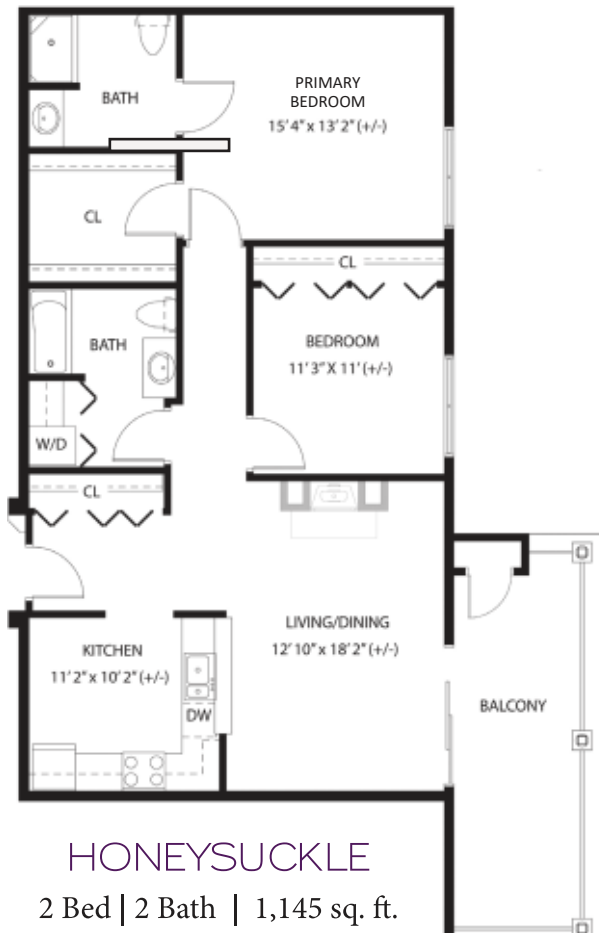
2 Bed | 2 Bath | 980 sq. ft.



DOGWOOD & ELDERBERRY

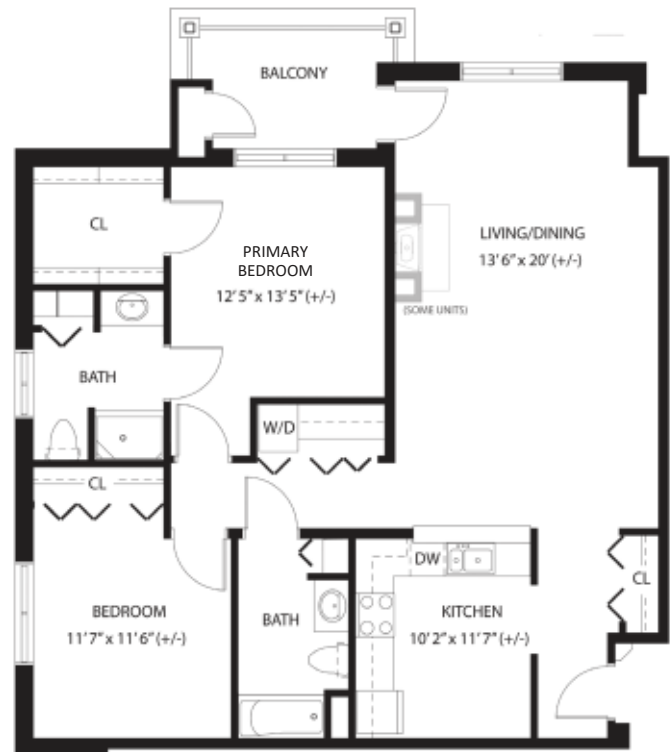
2 Bed | 2 Bath | 1,040 sq. ft.

Fireplace in Dogwood only



HONEYSUCKLE

2 Bed | 2 Bath | 1,145 sq. ft.



IVY

2 Bed | 2 Bath | 1,315 sq. ft.

NOTE: Some units may vary in layout. All dimensions are approximate.

Beautiful Spaces!

COMMON AREAS



- Private Courtyard and Scenic Gardens
- Raised Garden Beds
- Gallery 100 – Art Gallery for Local Artists
- Paved Community Wellness Paths
- Formal and Casual Dining Rooms
- Courtyard Café
- Garden Room with HD Television
- Game Room and Entertaining Space
- Cinema 100 Movie Theater
- Pool Parlor
- Library & Lounge with Fireplace
- Maples Room – Large Special Events
- Putting Green

Essential Services

INCLUDED SERVICES

- (20) Meals per month per person, offered in the dining venue of your choice (can be used for breakfast, lunch or dinner)
- Bi-weekly housekeeping and flat linen service
- Property taxes and all utilities are included (except telephone & cable television)
- Pendant-style, 24-hour in house call system
- Interior and exterior maintenance
- Free Wifi
- Free local transportation, including personal appointments, Sunday church service, and special event excursions
- Multi-faceted, dynamic event and activity programming with an emphasis on overall wellness, coordinated by a full-time certified Wellness Director
- Free membership to the Chelsea Wellness Center



IN-HOUSE SERVICES

- Salon, spa and barbering
- Massage therapy
- Foot care nurse
- Postal and notary services
- Social work services
- Lab work
- ATM
- Interdenominational worship services
- Personal assistance program
- Instructor-led exercise classes



2024 Price List

APARTMENT STYLE	MONTHLY FEES	ENTRY FEE OPTIONS	
		90% Refundable	50% Refundable
One-Bedroom Options:			
Aspen (550 sq. ft.)	\$2,870	\$154,000	\$ 97,000
Bayberry (600 sq. ft.)	\$3,110	\$168,000	\$ 105,000
Two-Bedroom Options:			
Cedar (980 sq. ft.)	\$3,560	\$234,000	NA
Dogwood (1,040 sq. ft.)	\$3,755	\$250,000	NA
Elderberry (1,040 sq. ft.)	\$3,755	\$250,000	NA
Honeysuckle (1,145 sq. ft.)	\$3,880	\$274,000	NA
Golden Bell (1,160 sq. ft.)	\$3,920	\$279,000	NA
Golden Rod (1,165 sq. ft.)	\$3,920	\$279,000	NA
Ivy (1,315 sq. ft.)	\$4,485	\$305,000	NA
2nd Person Fee	\$ 870		

TERMS

Entry fee refunds vary based on contract type selected, and is refunded to the resident or the resident's estate after leaving Silver Maples. The non-refundable portion of the entry fee is amortized at a rate of 1.5% per month until the contractual amount is fully amortized.

If a resident transfers to The Meadows (assisted living residence), \$800/month is deducted from the applicable Meadow's monthly service fee for up to 24 months. This discount does not affect the refundable portion of your entry fee. All Independent Living residents have priority access to Chelsea Retirement Community for advanced Memory Care or Skilled Nursing, assuming they meet admission criteria and financial requirements.

Prices are subject to change with 60 days prior written notice to residents.

***A 15% Seasonal Discount of monthly fees is available for those who are away for 3 or more consecutive months, but not to exceed 6 months.**

INCLUDED SERVICES

- (20) Meals Per Month
- Bi-weekly Housekeeping & Flat Linen Service
- 24-Hr. In-House Pendant-Style Call System
- All Utilities (except phone & cable)
- Free WiFi
- Property Taxes
- Maintenance of Apartment
- Storage Unit
- Access to all Common Areas
- Free Local Transportation (Including personal appointments and special event excursions)
- Multi-faceted, dynamic event and activity program with an emphasis on overall wellness, planned by a full time Wellness Director
- Free Membership to the Chelsea Wellness Center

Optional Services are available (see reverse side)



THE MAPLES

OPTIONAL SERVICES

Additional Meals	Breakfast: \$7.50 Lunch: \$10.75 Dinner: \$18.50
Meal Delivery Service	\$3.00 / Meal
Guest Apartment / VIP Suite	\$120.00 / Night (2 Bedroom / 2 Bathroom)
Rollaway Bed Rental	\$17.00 / Reservation
Housekeeping	\$30.00 / Hour
Covered Parking	\$40.00 / Month or \$440.00 / Year
Personal Assistance	\$30.00 / Hour (Hourly & Quarterly Billing Available)
Maintenance Assistance	\$35.00 / Hour / Person
Personal Shopping	See Personal Assistance Program Assistant
Pet Fee	\$825.00 (One-Time Fee)