



ASSISTED LIVING

# Apartments

Our all-inclusive supportive setting provides the assistance you need and the independence you desire with amenities and activities just steps away.

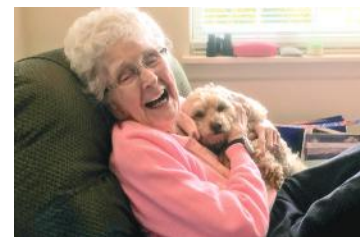
Located in our main building, the Meadows assisted living apartments are ideal for individuals and couples alike who value the independence of home and the convenience that on-site licensed\* care has to offer. Our goal is to keep you engaged and connected.

\*The Meadows assisted living at Silver Maples is licensed through the State of Michigan as a Home for the Aged.



## Beautiful Spaces!

### COMMON AREAS



- Trellis Dining Room w/fireplace
- Bistro 100
- Courtyard Café
- Private Dining Room
- Garden Room w/television
- Arts and Crafts Room
- Game Room w/billiards table
- Library and lounge w/fireplace
- Raised garden beds
- Horseshoe pits
- Private courtyard & scenic gardens
- Putting green
- Cutting garden
- Gallery 100 – Art Gallery showcasing local artists
- Community Wellness Paths – a paved path that connects several other paths in the community
- Maples Room – a beautiful multi-purpose room used for large in house special events as well as community events

## Essential Services

### INCLUDED SERVICES

- (3) nutritious meals each day in the dining venue of your choice (multiple entrée choices per meal)
- (4) levels of assistance with activities of daily living, including medication management at all levels
- Weekly housekeeping and laundry service
- Daily bed making
- All utilities are included (except telephone & cable television)
- Pendant-style, 24-hour in house call system
- Interior and exterior maintenance
- Free Wifi
- Free local transportation, including personal appointments, Sunday church service, and special event excursions
- Multi-faceted, dynamic event and activity programming with an emphasis on overall wellness, coordinated by a full-time certified Wellness Director
- Free membership to the Chelsea Wellness Center



Casual Spaces



Cozy Spaces



Wide Open Spaces

### IN-HOUSE SERVICES

- Salon, spa and barbering
- Massage therapy
- Foot care nurse
- Postal and notary services
- Social work services
- Lab work
- ATM
- Interdenominational worship services
- Personal assistance program
- Instructor-led exercise classes



# THE MEADOWS

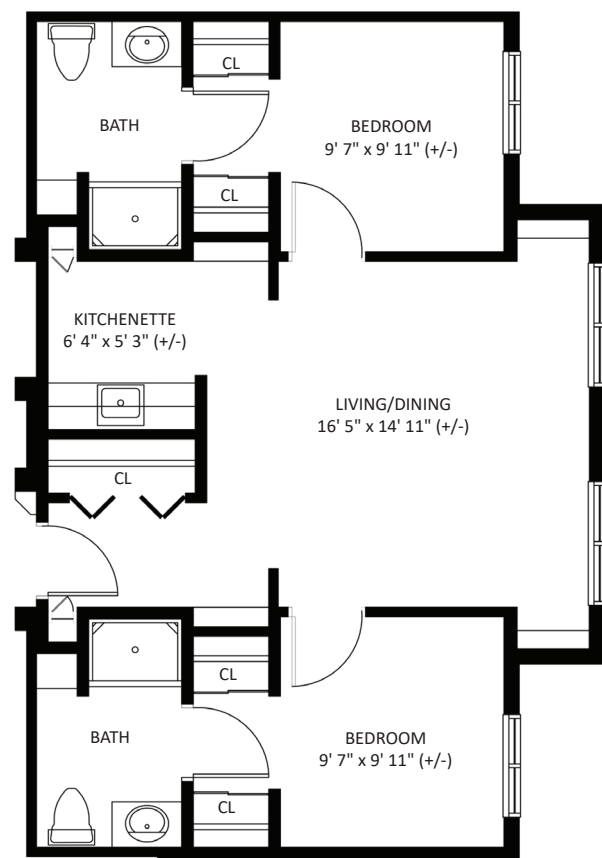
## APARTMENT FEATURES

- Private apartments range from 400 to 812 square feet
- Mini-blind window treatments provided for privacy
- Individually controlled heating and air conditioning
- High quality appliances, counter tops, cabinetry and building materials
- Kitchenette including sink, apartment-sized microwave, refrigerator, and freezer
- Private bath includes a walk-in shower
- Pre-wired for telephone and cable television
- Smoke detectors, fire alarms and sprinkler system
- Grab bars added when requested
- Comfort-height toilet

**AZALEA**  
Alcove / Studio | Private Bath  
400 sq. ft.



**OAK**  
1 Bed | 1 Bath  
440 sq. ft.



**TUPELO**  
2 Bed | 2 Bath  
812 sq. ft.

NOTE: Some units may vary in layout. All dimensions are approximate.

## GENERAL TIER LEVEL GUIDELINES FOR RESIDENTS

Each resident will be assessed and their tier level determined individually. The Assisted Living Director and Clinical Coordinator determines the level of care needed. Monthly service fees vary based on tier level of care needed and size of apartment desired.

	Transitions	TIER 1	TIER 2	TIER 3*
<b>Meals per day</b>	» 3 meals » Evening snack	» 3 meals » Evening snack	» 3 meals » Evening snack » Transportation to and from meals	
<b>Laundry</b>	» Weekly	» Weekly	» Weekly	» Weekly (additional if needed)
<b>Housekeeping</b>	» Weekly	» Weekly	» Weekly + additional bathroom cleaning	
<b>Personal Care (e.g. dressing)</b>	» Self managed or simple cueing	» Minimal assistance	» Frequent assistance and close supervision	
<b>Bath/ Showers</b>	» Self managed	» Stand-by assistance for safety	» Frequent hands-on assistance for care and safety	
<b>Incontinence Assistance</b>	» Self managed	» Minimal assistance	» Frequent assistance and supervision	
<b>Medication Assistance and Administration</b>	» Refills » Simple oral medication	» Refills » Simple oral medications, eye drops and inhalers	» Refills » Medication changes more than monthly » Complex medication regimens (i.e. insulin, meds requiring close monitoring, Coumadin, psychoactive meds, crushing meds, subcutaneous injections)	
<b>Medical Care Assistance</b>	» Self managed	» Coordination	» Scheduling and coordination	
<b>Safety and Judgement</b>	» Due to the complexity of cognitive impairments, this area is individually assessed based on multiple factors that affect an individual's need for cueing and supervision.			
<b>Medical Support</b>	» Emergencies	» Routine care (i.e. braces, weekly glucometer checks, vital signs ordered by licensed health professional)	» Non-routine support (i.e. frequent vital signs, daily to weekly glucometer ordered by licensed health professional, NMT treatments, hospice care)	» Tier 2 plus any type of care that requires additional support (i.e., behavioral changes and assessments requiring close supervision, frequent monitoring of health status needs)
<b>Activities</b>	» Scheduled community activities & events	» Daily reminders for activities	» Daily reminders and assistance to/from activities	
<b>Transfers/ Mobility</b>	» Self managed or minimal assistance		» 1 person assist	» 2 person assist or use of mechanical device

\*PLEASE NOTE: Tier 3 is available for current Silver Maples residents only.



## 2023 Price List

APARTMENT STYLE	TRANSITIONS	TIER 1	TIER 2
Azalea (Alcove, 400 sq. ft.)	\$5,525	\$6,350	\$7,090
<i>*Furnished</i>	\$5,775	\$6,600	\$7,340
Oak (1-Bdrm, 440 sq. ft.)	\$6,320	\$7,155	\$7,880
<i>*Furnished</i>	\$6,570	\$7,405	\$8,130
Tupelo (2-Bdrm, 812 sq. ft.)	\$7,900	\$8,565	\$9,290
<i>*Furnished</i>	\$8,150	\$8,815	\$9,540
<b>2nd Person Fee</b>	<b>\$1,850</b>		

### TERMS

Prior to moving in, the resident is expected to pay the last months service fee as a deposit to officially reserve the apartment. Once the deposit is paid, the resident has 10 days to either move in or start paying monthly fees. First month's service fees are prorated based on move-in date.

\*Furnished apartments will include a bed, mattress and bedside stand.

Thirty (30) days prior written notice must be provided if a resident intends to move out of The Meadows. Unused prepaid monthly service fees are refundable to resident or resident's estate after leaving The Meadows, less any damages that are noted. All Assisted Living residents have priority access to Chelsea Retirement Community for advanced Memory Care or Skilled Nursing, assuming they meet admission criteria and financial requirements. *Prices are subject to change with 60 days prior written notice to residents.*

### INCLUDED SERVICES

- (3) Meals Daily
- Weekly Housekeeping & Laundry Service
- Daily Bed Making
- (4) Levels of Assistance with Daily Living Activities *\*Medication management included in all levels.*
- Pendant-Style, 24-Hr. In-House Call System
- All Utilities (except phone & cable)
- Free Wifi
- Maintenance of Apartment
- Free Local Transportation (Including personal appointments and special event excursions)
- Multi-faceted and dynamic event and activity program with an emphasis on overall wellness, planned by a full time Wellness Director
- Free Membership to the Chelsea Wellness Center

*Optional Services are available (see reverse side)*



# THE MEADOWS

## OPTIONAL SERVICES

---

<b>Additional Meals</b>	Breakfast: \$7.00 Lunch: \$10.25 Dinner: \$17.50
<b>Food Tray Service</b>	\$3.00 / Tray
<b>Guest Apartment / VIP Suite</b>	\$120.00 / Night (2 Bedroom / 2 Bathroom)
<b>Rollaway Bed Rental</b>	\$17.00 / Reservation
<b>Housekeeping</b>	\$30.00 / Hour
<b>Covered Parking</b>	\$40.00/Month or \$440.00/Year
<b>Personal Assistance</b>	\$30.00 / Hour (Hourly & Quarterly Billing Available)
<b>Maintenance Assistance</b>	\$35.00 / Hour/ Man
<b>Personal Shopping</b>	See Personal Assistance Program Assistant
<b>Pet Fee</b>	\$825.00 (One-Time Fee)