

THE MEADOWS



ASSISTED
LIVING

Apartments

Our all-inclusive supportive setting provides the assistance you need and the independence you desire with amenities and activities just steps away.

Located in our main building, the Meadows assisted living apartments are ideal for individuals and couples alike who value the independence of home and the convenience that on-site licensed* care has to offer. Our goal is to keep you engaged and connected.

*The Meadows assisted living at Silver Maples is licensed through the State of Michigan as a Home for the Aged.



SILVER MAPLES
of Chelsea
RETIREMENT NEIGHBORHOOD

THE MEADOWS

APARTMENT FEATURES

- Private apartments range from 400 to 812 square feet
- Mini-blind window treatments provided for privacy
- Individually controlled heating and air conditioning
- High quality appliances, counter tops, cabinetry and building materials
- Kitchenette including sink, apartment-sized microwave, refrigerator, and freezer
- Private bath includes a walk-in shower
- Pre-wired for telephone and cable television
- Smoke detectors, fire alarms and sprinkler system
- Grab bars added when requested
- Comfort-height toilet

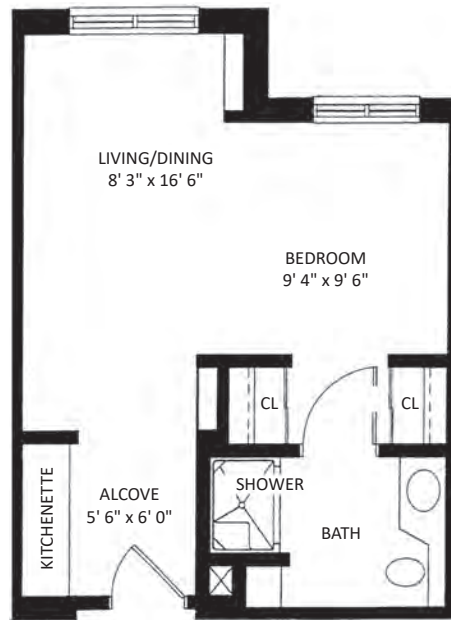


SILVER MAPLES
of Chelsea

RETIREMENT NEIGHBORHOOD

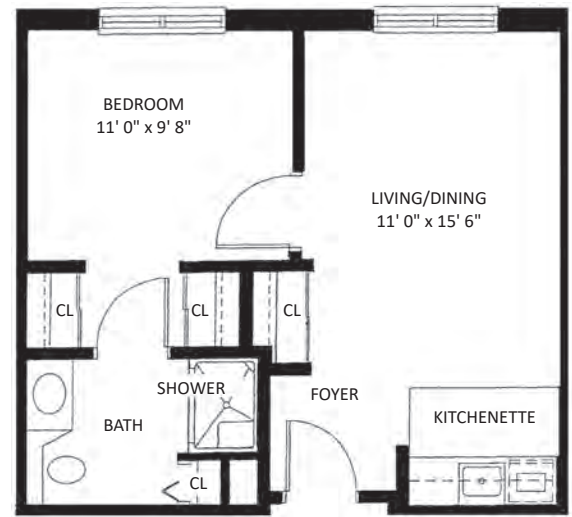
AZALEA

Alcove / Studio | Private Bath
400 sq. ft.



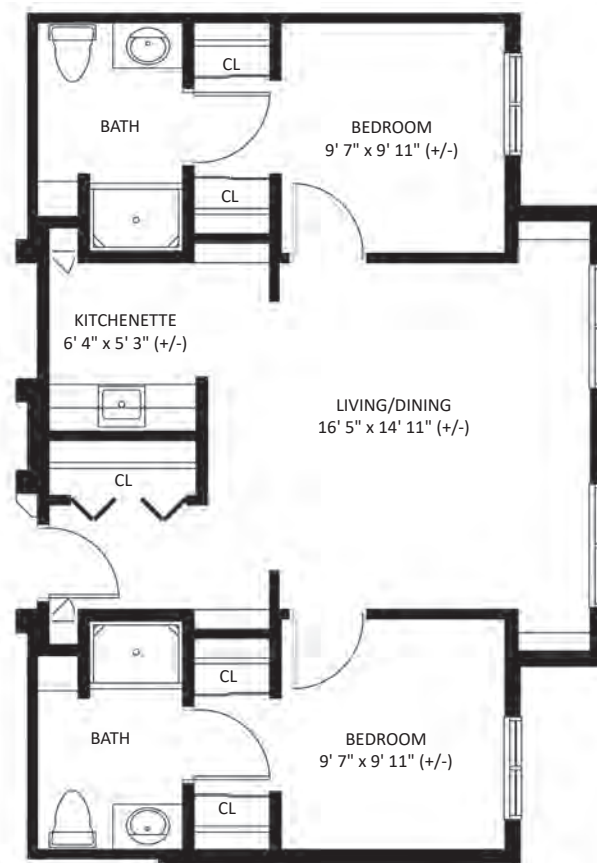
OAK

1 Bed | 1 Bath
440 sq. ft.



TUPELO

2 Bed | 2 Bath
812 sq. ft.



NOTE: Some units may vary in layout. All dimensions are approximate.

100 Silver Maples Drive, Chelsea, MI 48118

GENERAL TIER LEVEL GUIDELINES FOR RESIDENTS

Each resident will be assessed and their tier level determined individually. The Assisted Living Director and Clinical Coordinator determines the level of care needed. Monthly service fees vary based on tier level of care needed and size of apartment desired.

	Transitions	TIER 1	TIER 2	TIER 3*
Meals per day	» 3 meals » Evening snack	» 3 meals » Evening snack	» 3 meals » Evening snack » Transportation to and from meals	
Laundry	» Weekly	» Weekly	» Weekly	» Weekly (additional if needed)
Housekeeping	» Weekly	» Weekly	» Weekly + additional bathroom cleaning	
Personal Care (e.g. dressing)	» Self managed or simple cueing	» Minimal assistance	» Frequent assistance and close supervision	
Bath/ Showers	» Self managed	» Stand-by assistance for safety	» Frequent hands-on assistance for care and safety	
Incontinence Assistance	» Self managed	» Minimal assistance	» Frequent assistance and supervision	
Medication Assistance and Administration	» Refills » Simple oral medication	» Refills » Simple oral medications, eye drops and inhalers	» Refills » Medication changes more than monthly » Complex medication regimens » (i.e. meds requiring close monitoring, Coumadin, psychoactive meds, crushing meds)	
Medical Care Assistance	» Self managed	» Coordination	» Scheduling and coordination	
Safety and Judgement	» Due to the complexity of cognitive impairments, this area is individually assessed based on multiple factors that affect an individual's need for cueing and supervision.			
Medical Support	» Emergencies	» Routine care (i.e. braces, weekly glucometer checks, vital signs ordered by licensed health professional)	» Non-routine support (i.e. frequent vital signs, daily to weekly glucometer ordered by licensed health professional, NMT treatments, hospice care)	» Tier 2 plus any type of care that requires additional support (i.e., behavioral changes and assessments requiring close supervision, frequent monitoring of health status needs)
Activities	» Scheduled community activities & events	» Daily reminders for activities	» Daily reminders and assistance to/from activities	
Transfers/ Mobility	» Self managed or minimal assistance		» 1 person assist	» 2 person assist or use of mechanical device



*PLEASE NOTE: Tier 3 is available for current Silver Maples residents only.

Beautiful Spaces!



COMMON AREAS

- Private Courtyard and Scenic Gardens
- Raised Garden Beds
- Gallery 100 – Art Gallery for Local Artists
- Paved Community Wellness Paths
- Formal and Casual Dining Rooms
- Courtyard Café
- Garden Room with HD Television
- Game Room and Entertaining Space
- Cinema 100 Movie Theater
- Pool Parlor
- Library & Lounge with Fireplace
- Maples Room – Large Special Events
- Putting Green

Essential Services

INCLUDED SERVICES

- (3) nutritious meals each day in the dining venue of your choice (multiple entrée choices per meal)
- (4) levels of assistance with activities of daily living, including medication management at all levels
- Weekly housekeeping and laundry service
- Daily bed making
- All utilities are included (except telephone & cable television)
- Pendant-style, 24-hour in house call system
- Interior and exterior maintenance
- Free Wifi
- Free local transportation, including personal appointments, Sunday church service, and special event excursions
- Multi-faceted, dynamic event and activity programming with an emphasis on overall wellness, coordinated by a full-time certified Wellness Director
- Free membership to the Chelsea Wellness Center



IN-HOUSE SERVICES

- Salon, spa and barbering
- Massage therapy
- Foot care nurse
- Postal and notary services
- Social work services
- Lab work
- ATM
- Interdenominational worship services
- Personal assistance program
- Instructor-led exercise classes



2026 Price List

APARTMENT STYLE	TRANSITIONS	TIER 1	TIER 2
Azalea (Alcove, 400 sq. ft.)	\$6,190	\$7,115	\$7,945
<i>*Furnished</i>	\$6,440	\$7,365	\$8,195
Oak (1-Bdrm, 440 sq. ft.)	\$7,085	\$8,025	\$8,830
<i>*Furnished</i>	\$7,335	\$8,275	\$9,080
Tupelo (2-Bdrm, 812 sq. ft.)	\$8,860	\$9,600	\$10,415
<i>*Furnished</i>	\$9,110	\$9,850	\$10,665
2nd Person Fee	\$2,065		

TERMS

To reserve an apartment, a deposit equal to the last months service fee is required. Following completion of all required pre-move-in steps, the resident will have five (5) days to either move in or start paying monthly fees. First months service fees are prorated based on move-in date.

*Furnished apartments will include a bed, mattress and bedside stand.

Thirty (30) days prior written notice must be provided if a resident intends to move out of The Meadows. Unused prepaid monthly service fees are refundable to resident or resident's estate after leaving The Meadows, less any damages that are noted. All Assisted Living residents have priority access to Chelsea Retirement Community for advanced Memory Care or Skilled Nursing, assuming they meet admission criteria and financial requirements.

Prices are subject to change with 60 days prior written notice to residents.

INCLUDED SERVICES

- (3) Meals Daily
- Weekly Housekeeping & Laundry Service
- Daily Bed Making
- (4) Levels of Assistance with Daily Living Activities **Medication management included in all levels.*
- Pendant-Style, 24-Hr. In-House Call System
- All Utilities (except phone & cable)
- Free Wi-Fi
- Maintenance of Apartment
- Access to all Common Areas
- Free Local Transportation within Chelsea City Limits (Including personal appointments & trips)
- Dynamic wellness-focused events and activities planned by our Life Enrichment team
- Free Membership to the Chelsea Wellness Center



THE MEADOWS

OPTIONAL SERVICES

Additional Meals	Breakfast: \$8.00 Lunch: \$11.00 Dinner: \$19.00 Guest: \$23.00
Meal Delivery Service	\$5.00 / Meal
Rollaway Bed Rental	\$17.00 / Reservation
Housekeeping	\$31.00 / Hour
Covered Parking	\$40.00 / Month or \$440.00 / Year
Reserved Uncovered Parking	\$25.00 / Month or \$275.00 / Year
Personal Assistance	\$36.00 / Hour (Hourly & Quarterly Billing Available)
Maintenance Assistance	\$36.00 / Hour / Person
Personal Shopping	See Personal Assistance Program Assistant
Pet Fee	\$825.00 (One-Time Fee)