

# SHORT TERM RESPITE IN THE MEADOWS



## SHORT TERM ASSISTED LIVING

# Accommodations

Our all-inclusive supportive setting provides the assistance you need and the independence you desire with amenities and activities just steps away.

A short-term respite stay at Silver Maples can range from 1 week to several months and is ideal for:

- Primary caregivers who are traveling or need a break
- Families who would like to try the community for a future move
- Individuals after a recent hospitalization or stay in a rehabilitation facility



\*The Meadows assisted living at Silver Maples is licensed through the State of Michigan as a Home for the Aged.



SILVER MAPLES  
of Chelsea  
RETIREMENT NEIGHBORHOOD

# SHORT TERM RESPITE

## APARTMENT FEATURES

- Private, furnished apartment
- All linens are included
- Mini-blind window treatments provided for privacy
- Individually controlled heating and air conditioning
- High quality appliances, counter tops, cabinetry and building materials
- Kitchenette including sink, apartment-sized microwave, refrigerator, and freezer
- Private bath includes a walk-in shower
- Utilities include phone and cable
- Smoke detectors, fire alarms and sprinkler system
- Comfort-height toilet

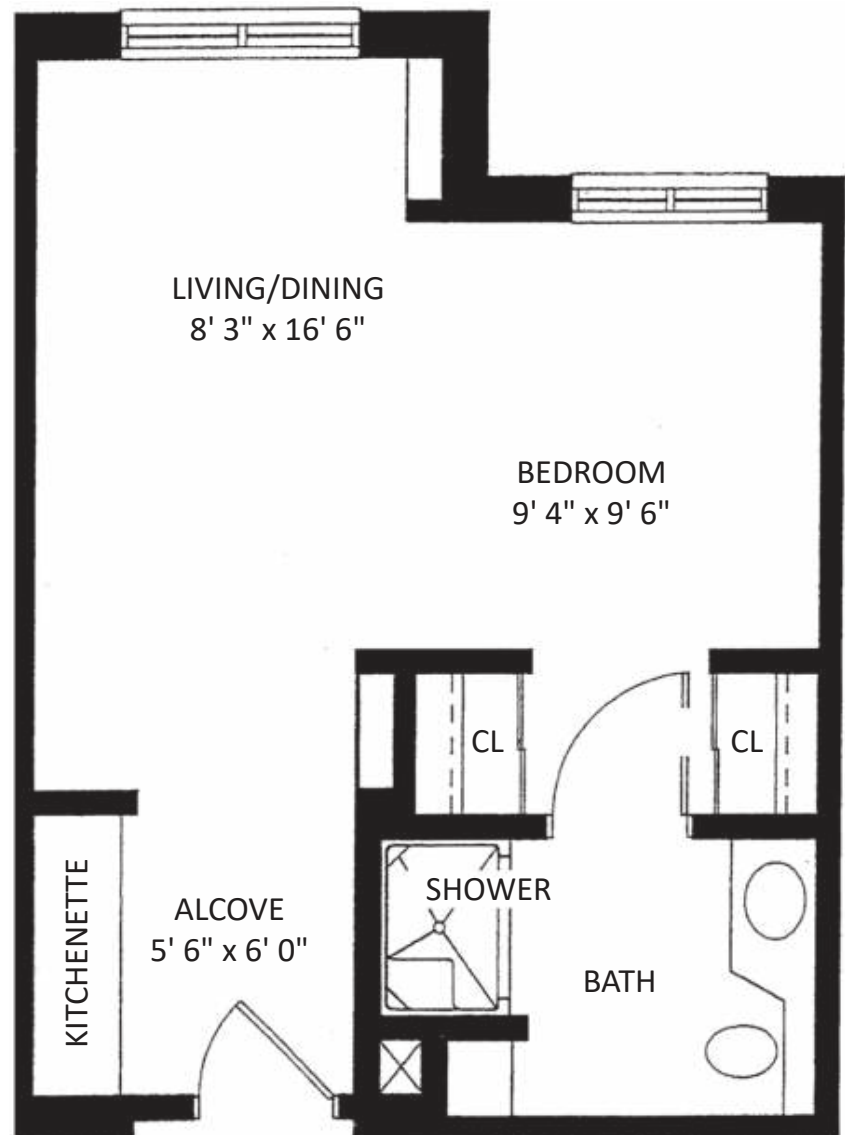


SILVER MAPLES  
*of Chelsea*

RETIREMENT NEIGHBORHOOD

## AZALEA

Alcove / Studio | Private Bath  
400 sq. ft.



100 Silver Maples Drive, Chelsea, MI 48118

# GENERAL TIER LEVEL GUIDELINES FOR RESIDENTS

Each resident will be assessed and their tier level determined individually. The Assisted Living Director and Clinical Coordinator determines the level of care needed. Daily/monthly service fees vary based on the tier level of care the individual needs.

	Transitions	TIER 1	TIER 2
<b>Meals per day</b>	» 3 meals » Evening snack	» 3 meals » Evening snack	» 3 meals » Evening snack » Transportation to and from meals
<b>Laundry</b>	» Weekly	» Weekly	» Weekly
<b>Housekeeping</b>	» Weekly	» Weekly	» Weekly + additional bathroom cleaning
<b>Personal Care</b> <i>(e.g. dressing)</i>	» Self managed or simple cueing	» Minimal assistance	» Frequent assistance and close supervision
<b>Bath/ Showers</b>	» Self managed	» Stand-by assistance for safety	» Frequent hands-on assistance for care and safety
<b>Incontinence Assistance</b>	» Self managed	» Minimal assistance	» Frequent assistance and supervision
<b>Medication Assistance and Administration</b>	» Refills » Simple oral medication	» Refills » Simple oral medications, eye drops and inhalers	» Refills » Medication changes more than monthly » Complex medication regimens <i>(i.e. insulin, meds requiring close monitoring, Coumadin, psychoactive meds, crushing meds, subcutaneous injections)</i>
<b>Medical Care Assistance</b>	» Self managed	» Coordination	» Scheduling and coordination
<b>Safety and Judgement</b>	» Due to the complexity of cognitive impairments, this area is individually assessed based on multiple factors that affect an individual's need for cueing and supervision.		
<b>Medical Support</b>	» Emergencies	» Routine care <i>(i.e. braces, weekly glucometer checks, vital signs ordered by licensed health professional)</i>	» Non-routine support <i>(i.e. frequent vital signs, daily to weekly glucometer ordered by licensed health professional, NMT treatments, hospice care)</i>
<b>Activities</b>	» Scheduled community activities & events	» Daily reminders for activities	» Daily reminders and assistance to/from activities
<b>Transfers/ Mobility</b>	» Self managed or minimal assistance		» 1 person assist

# Beautiful Spaces



## COMMON AREAS

- Private Courtyard & Scenic Gardens
- Gallery 100 – Art Gallery for Local Artists
- Paved Community Wellness Paths
- Formal and Casual Dining Rooms
- Courtyard Café
- Garden Room with HD Television
- Game Room and Entertaining Space
- Cinema 100 Movie Theater
- Pool Parlor
- Library & Lounge with Fireplace
- Maples Room – Large Special Events
- Putting Green



## IN-HOUSE SERVICES

- Salon, Spa & Barbering
- Podiatry & Foot Care Services
- Postal & Notary Services
- Social Work Services
- On-site Lab Services
- Complimentary Local Transportation
- On-site ATM & Banking Services
- Nondenominational Worship Services
- Personal Assistance Program
- Watch Repair & Jewelry Cleaning
- Audiology Services

# Essential Services

## INCLUDED SERVICES

- (3) nutritious meals each day in the dining venue of your choice (multiple entrée choices per meal)
- (4) levels of assistance with activities of daily living, including medication management at all levels
- Weekly housekeeping and laundry service
- Daily bed making
- All utilities (including phone and cable television)
- Pendant-style, 24-hour in house call system
- Interior and exterior maintenance
- Free Wifi
- Free local transportation, including personal appointments, Sunday church service, and special event excursions
- Multi-faceted, dynamic event and activity programming with an emphasis on overall wellness, coordinated by a full-time certified Wellness Director



## 2024 Price List

APARTMENT STYLE	TRANSITIONS	TIER1	TIER2
Azalea (Alcove, 400 sq. ft.) <i>Furnished</i>	\$7,265 (\$250/Day)	\$8,345 (\$290/Day)	\$9,315 (\$315/Day)
<b>2nd Person Fee</b>	<b>\$2,230</b> (\$80/Day)		

Silver Maples offers short term respite stays in the Meadows, our assisted living residence. Respite care is a great option for individuals who need day-to-day support, and seek the social engagement and activities a retirement community has to offer. At Silver Maples, our respite care stays can range from a week to several months and are ideal for:

- Primary caregivers who are traveling or need a break.
- Families who want their loved one to experience the community first-hand prior to committing to a future move.
- Individuals who need additional support after a recent hospitalization or stay in a rehabilitation facility.

### TERMS

Prior to occupancy, individuals are expected to prepay an amount consistent to their expected length of stay. Unused prepaid service fees are refunded to the resident after leaving The Meadows, less any damages that are noted.

### INCLUDED SERVICES

- (3) Meals Daily
- Weekly Housekeeping & Laundry
- Daily Bed Making
- Assistance with Daily Living Activities  
*(Medication management included in all levels)*
- Pendant-Style, 24-Hr. In-House Call System
- All Utilities (Including phone & cable)
- Free WiFi
- Free Local Transportation (Including personal appointments and special event excursions)
- Social and Recreational Programs
- Access to All Common Areas
- Lab work is available on-site with doctor's order

