

# Beautiful Spaces!

## COMMON AREAS

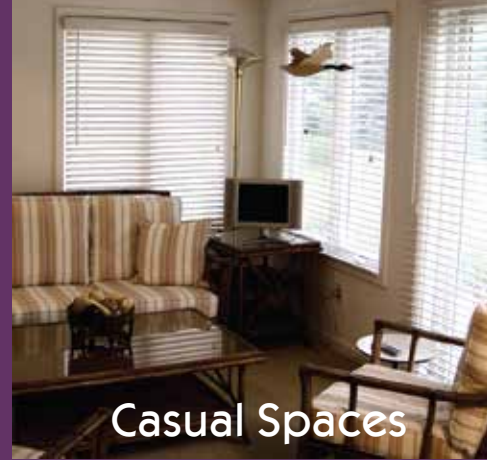


- Trellis Dining Room w/fireplace
- Bistro 100
- Courtyard Café
- Private Dining Room
- Garden Room w/television
- Arts and Crafts Room
- Game Room w/billiards table
- Woodworking Shop
- Library and lounge w/fireplace
- Raised garden beds
- Horseshoe pits
- Private courtyard & scenic gardens
- Putting green
- Cutting garden
- Gallery 100 – Art Gallery showcasing local artists
- Community Wellness Paths – a paved path that connects several other paths in the community
- Maples Room – a beautiful multi-purpose room used for large in house special events as well as community events

## Essential Services

### INCLUDED SERVICES

- **(10) Meals** per month offered in the dining venue of your choice (can be used for breakfast, lunch or dinner)
- Property taxes and all utilities are included (except telephone, cable television & internet)
- Automated **emergency notification** system
- Interior and exterior **maintenance**
- **Free local transportation**, including personal appointments, Sunday church service, and special event excursions
- Multi-faceted, dynamic **event and activity programming** with an emphasis on overall wellness, coordinated by a full-time certified Wellness Director
- **Free membership** to the Chelsea Wellness Center



Casual Spaces



Wide Open Spaces

### IN-HOUSE SERVICES

- Salon, spa and barbering
- Massage therapy
- Foot care nurse
- Postal and notary services
- Social work services
- Lab work
- ATM
- Interdenominational worship services
- Personal assistance program
- Instructor-led exercise classes



Cozy Spaces

# THE VILLAS



SILVER MAPLES  
of Chelsea  
RETIREMENT NEIGHBORHOOD



Designed for the lifestyles of today's active retirees, the Silver Maples independent living Villas offer the best of both worlds – providing the independence and privacy of home, just steps away from a vibrant, active neighborhood.

INDEPENDENT  
LIVING

# Homes

The Villas at Silver Maples are spacious – ranging from 1,890 to 2,030 sq. ft. – and are fully equipped with high quality appliances and build materials. Villa Homes are distinct from our independent apartment living options in that they all feature a gas fireplace, screened in porch or enclosed sunroom, and have an attached 1.5 or 2 car garage.



# THE VILLAS

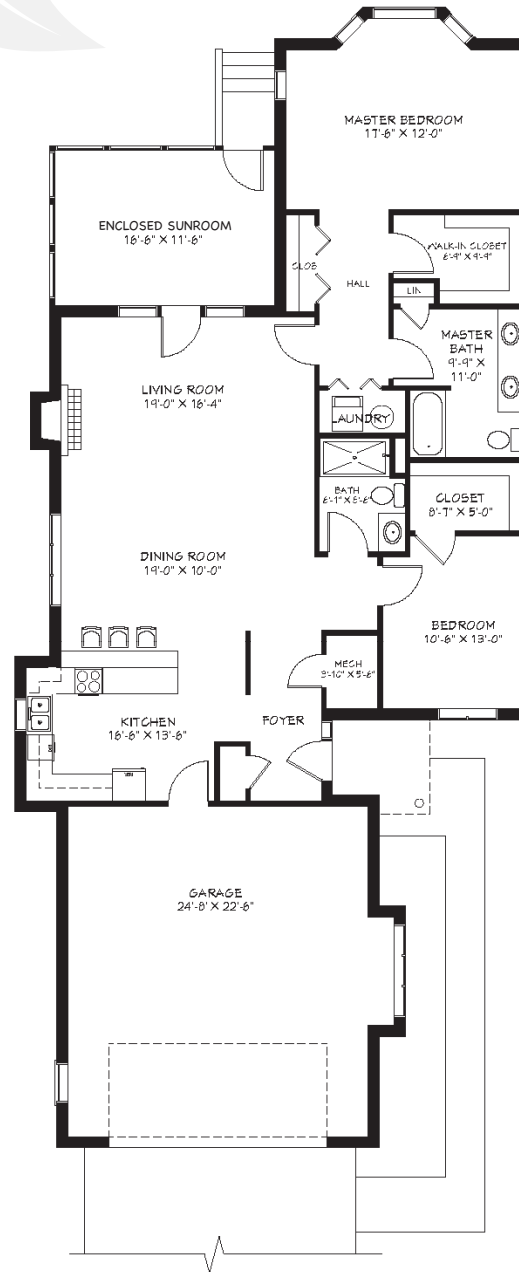
## HOME FEATURES

- Spacious 2-bedroom, 2 bathroom homes ranging from 1,890 to 2,030 square feet
- Screened in porch or enclosed sun room
- Vaulted ceilings
- High quality appliances, counter tops, cabinetry and building materials
- Fully equipped kitchen with stove, microwave, refrigerator, dishwasher, and garbage disposal
- Gas fireplace
- Washer and dryer provided
- Mini-blind window treatments provided for privacy
- Individually controlled heating and air conditioning
- Bathrooms include a tub/shower combo and walk-in shower in the master bath
- Pre-wired for telephone and cable television
- Smoke detectors, CO2 detector, fire alarms and sprinkler system
- Attached 1.5 or 2 car garage (depending on floor plan)
- Home protection, alarm and emergency monitoring system



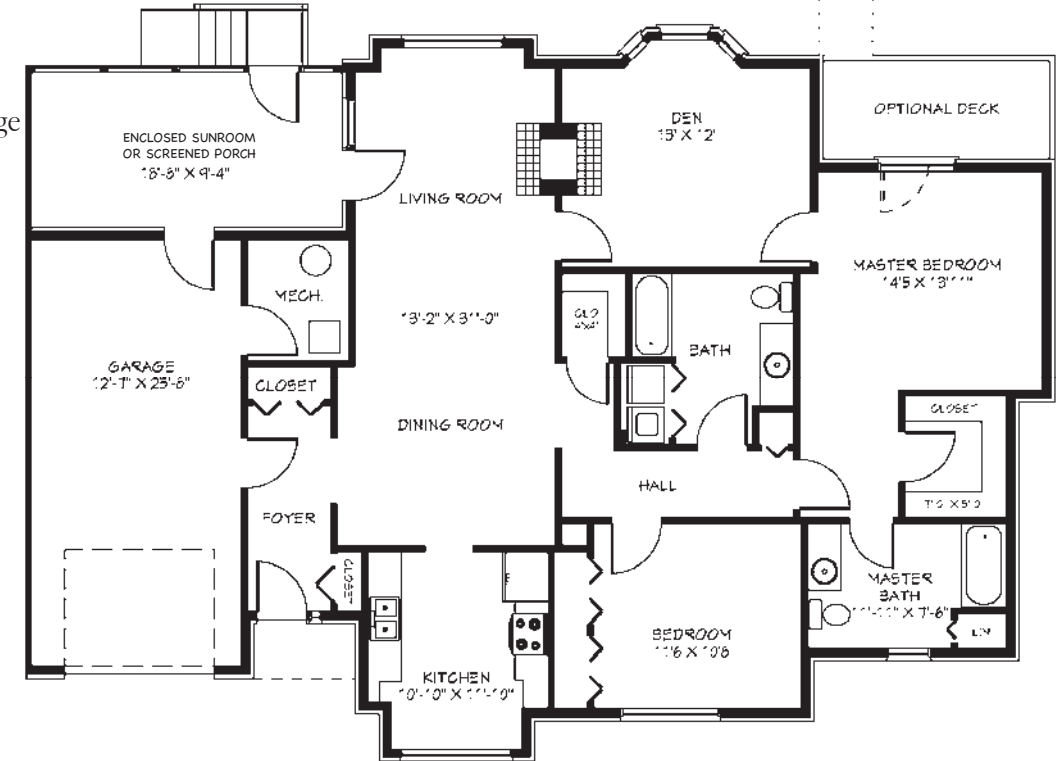
### MAPLEWOOD

Duplex Villa | 1,890 sq. ft.  
2 Bed | 2 Bath | 2 Car Garage



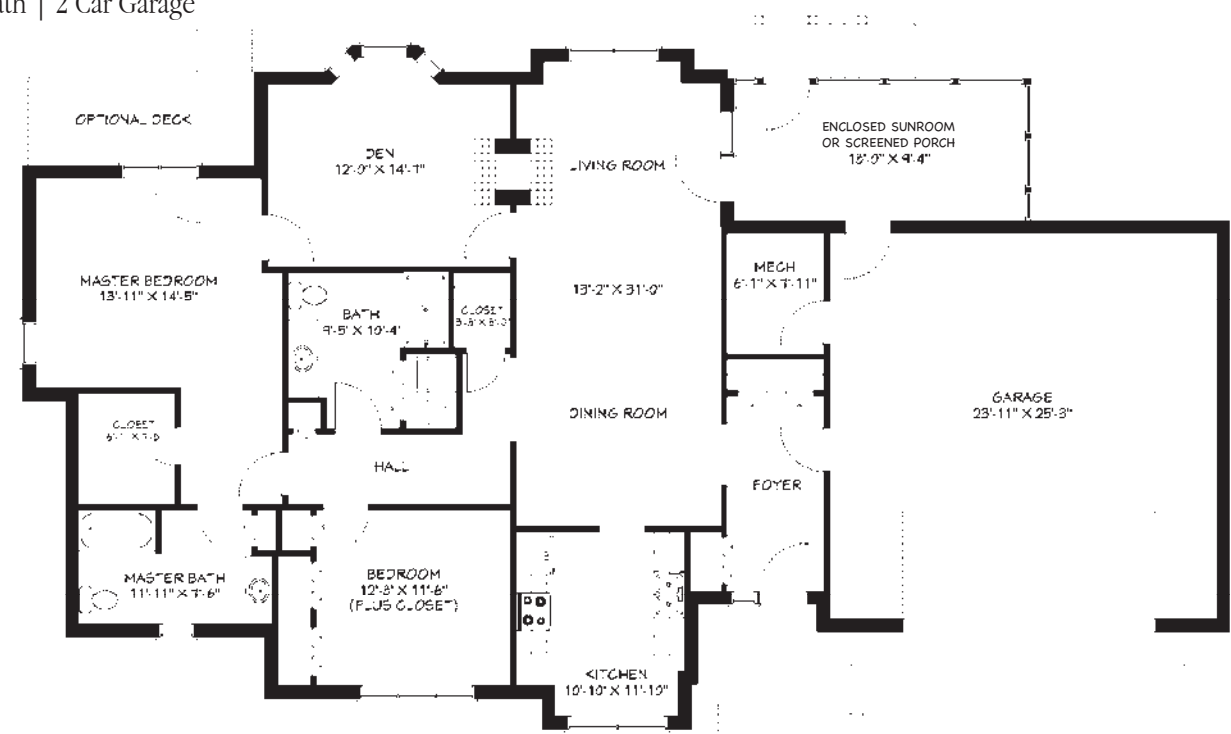
### WILDWOOD

Free Standing Villa | 1,990 sq. ft.  
Den | 2 Bed | 2 Bath | 1.5 Car Garage



### ROSEWOOD

Free Standing Villa | 2,030 sq. ft.  
Den | 2 Bed | 2 Bath | 2 Car Garage



## FLOOR PLANS AT A GLANCE

	Style	Square Ft.	Bedroom	Bathroom	Den	Garage
<b>Maplewood</b>	Duplex Villa	1,890 sq.ft.	2 Bedroom	2 Bath	No	2 Car Garage
<b>Wildwood</b>	Stand Alone Villa	1,990 sq.ft.	2 Bedroom	2 Bath	Yes	1.5 Car Garage
<b>Rosewood</b>	Stand Alone Villa	2,030 sq.ft.	2 Bedroom	2 Bath	Yes	2 Car Garage



NOTE: Some units may vary in layout. All dimensions are approximate.

# THE VILLAS

100 SILVER MAPLES DR | CHELSEA, MI 48118 | 734-475-4111 | FX: 734-475-4112 | WWW.SILVERMAPLES.ORG

## 2019 Price List

VILLA STYLE	MONTHLY FEES	ENTRY FEES		
		90% Refundable	50% Refundable	0% Refundable
<b>Maplewood</b> <i>(1,700+ sq. ft.)</i>	\$2,835	\$328,000	\$204,000	\$142,000
<b>Wildwood</b> <i>(1,820+ sq. ft.)</i>	\$3,080	\$355,000	\$220,000	\$153,000
<b>Rosewood</b> <i>(1,860+ sq. ft.)</i>	\$3,410	\$387,000	\$240,000	\$166,000

**2nd Person Fee \$ 645**

### TERMS

Entry fee refunds vary based on contract type selected, and is refunded to the resident or resident's estate after leaving Silver Maples. The non-refundable portion of the entry fee is amortized at a rate of 1.5% per month until the contractual amount is fully earned.

If a resident transfers to The Meadows (assisted living residence), \$400/month is deducted from the applicable Meadow's monthly service fee for up to 36 months. This discount does not affect the refundable portion of your entry fee. All Independent Living residents have priority access to Chelsea Retirement Community for advanced Memory Care or Skilled Nursing, assuming they meet admission criteria and financial requirements. *Prices are subject to change with 60 days prior written notice to residents.*

**\*A 15% Seasonal Discount off monthly fees is available for those who are away for 3 or more consecutive months, but not to exceed 6 months.**

### INCLUDED SERVICES

- (10) Meals Per Month
- All Utilities (except phone, cable & WiFi)
- Property Taxes
- Interior/Exterior Maintenance
- Home protection alarm and emergency monitoring system
- Lawn Care/Snow Removal
- Weekly Trash Removal
- Access to all Common Areas
- Free Local Transportation (Including personal appointments and special event excursions)
- Multi-faceted and dynamic event and activity program with an emphasis on overall wellness, planned by a full time Wellness Director
- Free Membership to the Chelsea Wellness Center



# THE VILLAS

## OPTIONAL SERVICES

---

<b>Additional Meals</b>	Breakfast: \$6 Lunch: \$8.50 Dinner: \$15
<b>Guest Apartment / V.I.P. Suite</b>	\$95/Night (2 bedroom/2 bathroom)
<b>Rollaway Bed Rental</b>	\$15 for each reservation
<b>Housekeeping</b>	\$22/Hour
<b>Personal Assistance</b>	\$21/Hour ( <i>A minimum 1 hr. fee is required</i> )
<b>Personal Shopping</b>	See Personal Assistance Program Assistant
<b>Pet Deposit</b>	\$750